



## Engage your clients with immersive, multi-touch technology.

### Information at the tip of your finger.

Multi-Touch display solutions from Transformyx create an environment of cost-effective and energy efficient computing for your client. Originally designed for use in Utilities, Security, Transportation and Government, multi-touch solutions have now grown to accommodate Healthcare, Education, Real Estate, Construction, Food & Beverage and Retail environments.

### Multi-Touch tables, displays, floors, walls and more.

There are many ways to display information in a multi-touch environment ranging from smartphones to tablets to desktops, to monitors from 20" to 90" to walls of up to 30' or more. The application of the multi-touch instance usually dictates the types of devices that will be used. There is no limit to what can be done with a multi-touch environment and what it can mean in terms of communications, presentations and the sharing of information between you and your end-user.



#### Software Options Available Include:

- Interactive 2D/3D models and animations in Maya, 3D Max and CAD, CAM software
- Interactive-data visualization with linear or non-linear styles
- Develop content that is transferable to websites, print, or videography.
- Integrate peripheral equipment such as RFID, Bluetooth, iPhone, digital camera, card reader, bar-code scanner, etc.

#### Hardware Options Available:

- 1x1, 2x2, 3x3 Multi-Touch Clarity Matrix from Planar
- 50" Multi-Touch, ultra light weight, and portable (most popular)
- 50" Multi-Touch Table
- 42" Multi-Touch, ultra light weight, and portable
- 32" Multi-Touch, ultra light weight, and portable (very popular)
- 30" Multi-Touch Table
- 19"/23" Multi-Touch All-in-one (most popular for office use)
- 12" Multi-Touch Tablet
- Single-touch transparent foil for touch-through window

#### Solutions by Industry for:

- Hospitals and Healthcare
- Banks and Financial Services Firms
- Public and Private K12 School Districts
- University Systems
- Restaurants
- Malls and Retail
- Public and Private Utilities
- Public and Private Transportation
- State and Local Government
- Real Estate and Construction

For more information, contact us:

Transformyx - 12232 Industriplex Blvd. Ste 19 - Baton Rouge, Louisiana 70809  
 Phone: (225) 761-0088 - Email: sales@tfmx.com - Web: www.transformyx.com

## Multi-Touch Business Presentation System.

You may have seen CNN's multi-touch wall or the multi-touch tables at AT&T Stores. Now, Transformyx, Inc., a leading technology architect and integration firm, provides multi-touch solutions for every business type with an eye-catching digital interactive display. The Transformyx Multi-Touch Solution is an affordable and robust multi-touch system to present information in an exciting new way!



The Transformyx Business Presentation System Series supports display from 19 to 100 inches on single/dual/multi touch-screens. No matter what multi-touch hardware you have or we provide as a part of your solution, the Transformyx Multi-Touch Solution allows your end-user to easily zoom, rotate, and pan on your pictures, videos, marketing materials, product manuals, and 3D rendered models.

## Multi-Touch Way-finding, Directory and Floor-planning.

**Interactive Way-finding and Directory**, is a cutting-edge replacement for your static maps and directories. It allows visitors to easily search and select directory entries and facilities from your list and get automatic visual directions to their destination, without ever having to manually trace a map or orient themselves.

Perfect for hotels, residential complexes, shopping centers, malls, hospitals, grocery stores, and office buildings with an optional plug-in live camera feed can show landmarks and destination locations as they currently appear, making way-finding even easier. The system can also provide tenants and visitors with conference schedules, advertisements, promotions, local information, and rental information from your company. And with multi-touch technology, even the largest maps can be browsed in great detail with support for pan, rotate, and zoom functions.

**Interactive Floor-planning**, is new and exciting way for real estate, construction, architecture and engineering firms and petro-chemical companies to showcase their portfolios.

Imagine your company rendering a potential project entirely in 3D with multi-touch pan-zoom-scale capabilities to present to your customer/investor. Then imagine being able to take that customer from the perimeter of your proposed project all the way into the center-most point of the project to show the interior with "on-the-fly" customization of colors and objects on the property. Direct integration with Google Earth or Google Maps provides another layer of interactivity and plotting.

## Business Presentation Systems - Key Features:

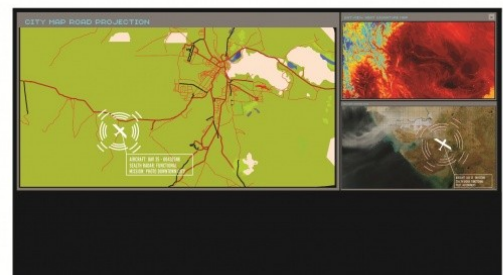
- Rich Media Presentation
- Single/Multi-Touch Natural Gestures
- Eye-catching, interactive experience
- Supports sales presentation on tablet + projector
- Easy do-it-yourself content changes
- Clear, bright, high-resolution displays from 19" to 30'
- One-stop solution from Transformyx
- Excellent customer support by phone and email
- Easy installation on your own single/dual/multi touch hardware Available on HP TouchSmart at 12", 23", 26" and 42"

## Additional Features:

- Convenient, fun, and easy to use
- iPad-like multi-touch options
- Drag-and-drop floor plan editing
- Cross-promote your businesses
- Clear, bright, high-resolution displays from 19" to 30'
- Various casing options
- Remote content updates from Transformyx
- Low maintenance costs
- Very Low energy consumption
- Customized to fit your needs

## Way-finding & Floorplanning Benefits:

- Make a great impression with a state-of-the-art digital interactive directory system.
- Showcase your available units and building amenities with flattering high-definition photos and videos.
- Allow prospects to contact your leasing or sales office, even after business hours.
- Allow visitors and tenants to conveniently find their way around the building.
- Give tenants and visitors access to building services even when no staff is present.
- Provide automated onscreen concierge services, such as weather, traffic conditions, and recommendations of local establishments from Yelp.com.
- Engage your clients and partners with 3D renderings of your projects and properties.
- Engage your IT and security personnel with real-time asset information displayed on touch walls and screens.



For more information, contact us:

Transformyx - 12232 Industriplex Blvd. Ste 19 - Baton Rouge, Louisiana 70809  
Phone: (225) 761-0088 - Email: sales@tfmx.com - Web: www.transformyx.com